

TASKalfa 

› PRINT › COPY › SCAN › FAX

TASKalfa 356ci
TASKalfa 406ci

COLOUR MULTIFUNCTIONALS
FOR A4 FORMAT



HIGH
PERFORMANCE
ALL-ROUNDERS
FOR A4.



 **KYOCERA**
Document Solutions

HIGH QUALITY MEETS MAXIMUM FLEXIBILITY

A GREAT ALL-ROUNDER WITH UNRIVALLED CAPABILITIES

Our new A4 colour multifunctionals are ideal for workgroups and departments which require the highest levels of functionality and flexible paper handling coupled with the reliability of A3 devices.

Thanks to their fast output, superior scanning speeds and finishing versatility, they boast high productivity and all key functions are easily accessible using the intuitive menu on the large touchscreen.

High-capacity finishing options and high-volume paper supplies designed to suit continuous print runs are just some of the outstanding paper-handling features of this new range.

Choose between two document processors, a number of paper feeders and a range of finishing options to tailor the device to your needs. Additionally, our advanced colour and toner technology ensures amazing quality and colour clarity with up to 1,200 dpi.

Thanks to our unique and durable components, our MFPs provide efficient, high-quality colour document output whilst keeping downtime and waste to an absolute minimum.



PRODUCT SUMMARY

- > UP TO 40 PAGES PER MINUTE A4 IN B/W, COLOUR IN SIMPLEX AND DUPLEX (TASKalfa 406ci)
- > SCANS UP TO 120 IMAGES PER MINUTE WITH THE ONE-PATH DUPLEX DOCUMENT PROCESSOR*
- > FIRST COLOUR COPY IN 6.9 SECONDS (TASKalfa 406ci)
- > MEDIA FLEXIBILITY: PRINTING FROM A6 UP TO BANNER LENGTHS OF UP TO 1,200 MM
- > INDIVIDUAL PAPER HANDLING INCLUDING POWERFUL FINISHING OPTIONS
- > VARIOUS PAPER FEEDERS FOR UP TO 3,100 SHEETS AND FIVE MEDIA TYPES*
- > EXCELLENT PRINT QUALITY OF UP TO 1,200 DPI
- > 2 GB RAM AND UP TO 320 GB HDD MEMORY AND STORAGE
- > SECURE*: EASY AUTHENTICATION SUPPORTS MULTIPLE USB CARD TECHNOLOGIES, DATA SECURITY KIT
- > FAX FUNCTIONS* WITH UP TO 600 DPI, Super G3, DUAL FAX, NETWORK FAX, INTERNET FAX
- > DURABLE COMPONENTS ENSURE EXCEPTIONAL EFFICIENCY AND RELIABILITY WHILE GENERATING LESS WASTE

* OPTIONAL



TURN YOUR PAPER DOCUMENTS INTO DIGITAL FILES

The new multifunctionals make digitisation incredibly quick and easy. The devices can also scan documents from A6 up to large banners. Use the control panel to access various destinations as to a server, an email address, a folder or a USB device, or multiple destinations at once. Choose the file format (PDF, compact PDF, encrypted PDF, searchable PDF, JPEG, TIFF, XPS or open XPS) and enjoy virtually lossless data compression.

Additional great features include the one-path duplex document processor which carries out the scanning task at an amazing rate of up to 120 ipm and the optional OCR technology which turns scanned documents into text. This not only allows you to search the scanned document but also to edit and share it.

UNRIVALLED COLOUR QUALITY

A high-quality colour printout can make the difference between an average business presentation and one which wins new clients. Our MFPs allow you to easily produce documents in

1,200 dpi with high colour consistency, clarity and gradation, projecting a truly professional image of your business.





ECONOMY

- > Our long-life printer drum with an amorphous silicon surface lasts for at least 300,000 prints*
- > High reliability = less downtime = more savings

* Only TASKalfa 406ci



ENVIRONMENT

- > Uses minimal energy
- > Quiet mode reduces noise emissions
- > Long-life components save resources and reduce waste



USABILITY

- > Large seven-inch tilting colour touch panel (0–90 degrees)
- > Customisable home screen with simple and intuitive menu
- > IC card readers combine ease of use with enhanced security
- > Improved printer driver with enhanced functionality and usability

SECURITY, FLEXIBILITY AND PEACE OF MIND

RELAX WITH SECURE DOCUMENT MANAGEMENT

To safeguard against potential security risks, TASKalfa devices utilise SSL data encryption and are equipped with IPsec, IPv6 and PDF encryption as standard. To further protect your most sensitive data, we also offer an optional card authentication

function that prevents unauthorised access. Also available as an optional feature is KYOCERA's Data Security Kit with 256-bit encryption of stored files and secure deletion of obsolete data stored on the hard disk during printing, copying or scanning.

TAILORED TO YOUR INDIVIDUAL NEEDS

HyPAS™, KYOCERA's open software development platform, allows you to integrate the device into your existing business workflow. You can set it up quickly and easily using the control panel, and thereby make sure it fits perfectly into your office

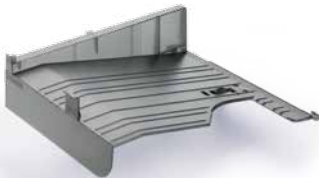
environment when using ordinary business applications like Document Management Systems or Enterprise Resource Planning (ERP). Once configured, it will leave you free to focus on what really matters – your business.

ENHANCING YOUR MFP EVEN FURTHER

PAPER HANDLING SOLUTIONS TO MATCH EVERY NEED

Choose from a wide range of paper handling options. Select from two document processors and three finishers that can be added to your basic MFP to provide an output capacity of up to

3,300 sheets. Additional paper trays can also be added to expand paper capacity to 3,100 sheets. This enables non-stop printing in different formats.



JOB SEPARATOR JS-5100

100-sheet job separator tray is ideal for fax or copy output.



DOCUMENT PROCESSOR DP-5100

75-sheet document processor, automatically reverses double-sided documents.



300-SHEET FINISHER DF-5100

Output capacity of up to 300 sheets with stapling of up to 50 sheets in three positions.

3,200-SHEET FINISHER DF-5120

3,000 sheets for high-capacity outputs. 200-sheet sub tray for separation. Stapling of up to 50 sheets in three positions plus punching.

1,000-SHEET FINISHER DF-5110

1,000-sheet finisher for large outputs. Stapling of up to 50 sheets in three positions plus optional punching.



-
- 1 FIVE-BIN MAILBOX SORTER MT-5100**
Ideal for large workgroups: separates users' output into five trays, each up to 100 sheets. Main tray for large runs of up to 500 sheets.
 - 2 DUPLEX DOCUMENT PROCESSOR DP-5110**
Up to 75-sheet capacity from A6–A4 / Legal or banner sheets up to 1,900 mm. Scans double-sided documents in one-path.
 - 3 ATTACHMENT KIT AK-5100 (100 sheets)**
Bridge unit required for MT-5100, DF-5110 and DF-5120. Offers 100-sheet output capacity.

- 4 500-SHEET PAPER FEEDER PF-5120**
Enhances total paper capacity to 1,100 sheets. Supports A6–A4 / Legal with paperweights up to 220 g/m².
- 5 2 x 500-SHEET PAPER FEEDER PF-5130**
For a total of five trays for different paper formats and media types. Supports A6–A4 / Legal with paper weights up to 220 g/m². Requires PF-5120.

CARD AUTHENTICATION
The card authentication function protects sensitive data and supports personalised device settings.



2,000-SHEET PAPER FEEDER PF-5140
Ideal for large print runs in A4, increases total paper capacity to 3,100 sheets. Supports paper weights up to 220 g/m². Requires PF-5120.





The TASKalfa 356ci/406ci incorporate extremely durable components that guarantee efficient and reliable operation, to meet the demanding requirements of busy office environments. These devices provide effective productivity and maximum flexibility whilst ensuring minimum impact on the environment.

TASKalfa 356ci/TASKalfa 406ci

GENERAL

Technology: KYOCERA Colour Laser, HyPAS™ solution platform

Control panel display: 17.8 cm (7 inch) full-colour touch panel display, tilt in many steps (0–90 degree)

Engine speed: (A4 per minute in colour, b/w, simplex, duplex): TASKalfa 356ci: Up to 35 pages, TASKalfa 406ci: Up to 40 pages

Resolution: 1,200 x 1,200 dpi print at reduced speed, multibit technology for print quality of up to 9,600 x 600 dpi (print), 600 x 600 dpi, 256 greyscales per colour (scan/copy)

Duty cycle (Max. pages per month):

TASKalfa 356ci: 100,000, TASKalfa 406ci: 150,000

Warm-up time: Approx. 24 seconds or less

Time to first print (Approx. seconds in b/w / colour):

TASKalfa 356ci: 5.5/6.5, TASKalfa 406ci: 5.4/6.4

Time to first copy (Approx. seconds in b/w / colour):

TASKalfa 356ci: 5.9/7.3, TASKalfa 406ci: 5.8/6.9

CPU: Freescale QorIQ P1022 (Dual Core) 800MHz

Memory: Standard 2,048 MB

TASKalfa 356ci: 8 GB SSD, TASKalfa 406ci: 320 GB HDD
Standard interface: 3 x USB Host Interface, Gigabit Ethernet (10BaseT/100BaseTX/1000BaseT) 2 slots for optional internal print server or fax, slot for optional SD/SDHC-card

Integrated accounting: 1,000 department codes

Dimensions (WxDxH): Main unit: 550 x 507 x 612.8 mm (without Document Processor)

Weight: Main unit: Approx. 48 kg (without Document Processor)

Power source: AC 220 ~ 240 V, 50/60 Hz

Power consumption: Copy/Print: 752 W

Ready mode: 110 W Low-power mode: 64 W

Sleep-mode: 1.6 W Auto-off: 0.3 W

Noise (Sound pressure level: ISO 7779/ISO 9296):

TASKalfa 356ci / 406ci

Copy/Print in colour: 49.6 50.8 dB(A) LpA

Quiet mode in colour: 46.4 47.2 dB(A) LpA

Ready mode: 25.4 25.5 dB(A) LpA

Sleep mode: Immeasurable low

Safety standards: GS, TÜV, CE

This unit is manufactured according to ISO 9001 quality standard and ISO 14001 environmental standard.

PAPER HANDLING

All paper capacities quoted are based on a paper thickness of max. 0.11 mm. Please use paper recommended by KYOCERA under normal environmental conditions.

Input capacity: 100-sheet multipurpose tray; 60–220 g/m²; A4, A5, A6, B5, B6, Letter, Legal, Custom (70 x 148 mm – 216 x 356 mm), Banner (up to 216 x 1,220 mm, 129–163 g/m²), 500-sheet universal cassette; 60–220 g/m²; A4, A5, A6, B5, B6, Letter, Legal, Custom (105 x 148 mm – 216 x 356 mm). Max. input capacity with options: 3,100 sheets

Duplex functionality as standard: Double-sided printing: 60–220 g/m²; A4, A5, B5, Letter, Legal

Output capacity: 500 sheets face down with paper full sensor

PRINT FUNCTIONS

Control language: PRESCRIBE IIc

Emulations: PCL 6 (PCL 5c/PCL-XL), PostScript 3 (KPDL 3), PDF Direct Print 1.7, XPS/Open XPS Direct Print

Operating systems: All current Windows operating systems, MAC OS X Version 10.5 or higher, Unix, Linux as well as other operating systems on request

Fonts/Barcodes: 93 scalable PCL fonts, 136 scalable PostScript fonts, 8 fonts for Windows Vista, 1 bitmap font, 45 barcodes (e.g. EAN8, EAN13, EAN128) with automatic generation of checkmarks as well as support of two-dimensional barcodes PDF-417 under PRESCRIBE (PCL and other barcodes available as an option)

Security features: IPsec, HTTPS, SNMPv3, IPPS, Encrypted PDF Direct Print, Private Print, Secure printing via SSL, POP over SSL, SMTP over SSL, Access control via integrated department codes, Data Security Kit (E) protects data on the HDD

Mobile printing support: KYOCERA Mobile Print app for iOS and Android, AirPrint, Mopria

COPY FUNCTIONS

Max. original size: A4/Legal

Continuous copying: 1–999

Zoom range: 25–400% in 1% steps

Preset magnification ratios: 7 reductions/5 enlargements

Exposure mode: Auto, manual: 9 steps

Image adjustments: Text + Photo, Photo, Text, Map, Printed document

Features: Auto Colour Mode, Scan once copy many, electronic sort, 2in1, 4in1, ID-card copy, job reserve, priority print, program, auto duplex copy, split copy, continuous scan, copy preview, image repeat copy, page numbering, stamp function, form overlay and skip blank page function

SCAN FUNCTIONS

Functionality: Scan to E-mail (SMTP over SSL), Scan to FTP (FTP over SSL), Scan to SMB, Scan to USB Host, Scan to Document Box (HDD), TWAIN scan (USB, network), WSD (WIA) scan (USB, network)

Scan speed DP-5100: Up to 60 ipm (300 dpi, A4, b/w), 40 ipm (600 dpi, A4 b/w, 300 dpi, A4, colour)

Scan speed DP-5110: Up to 120 ipm (300 dpi, A4, b/w), 80 ipm (300 dpi, A4, colour)

Scan resolution: 600, 400, 300, 200 dpi (256 greyscales per colour)

Max. scan size: A4, Legal, Banner 216 x 1,900 mm (8.5 x 72 inch)

Original recognition: Text + Photo, Photo, Text, Light Text/ Fine Line, optimised for OCR

File types: TIFF, PDF, PDF/A, high-compression PDF, encrypted PDF, searchable PDF (Option), JPEG, XPS, Open XPS

Compression method: MMR/JPEG

Features: Integrated address book, Active Directory support, encrypted data transfer, multi send (E-mail, Fax, SMB/FTP folder, print) at once, scan to HDD, scan preview

OPTIONS

Fax System 10 (max. 2): Super G3 Fax, network Fax

Internet Fax Kit (A): Option for Fax System 10, T.37 via SMTP/POP3 server

Scan Extension Kit (A): Scan to searchable PDF solution (embedded OCR)

DP-5100 Reversing document processor; DP-5110 One-path duplex document processor: 75-sheet, 50–120 g/m², A4, A5, A6, B5, Letter, Legal, Custom (105 x 148 mm to 216 x 356 mm), Banner up to 1,900 mm

PF-5120 Paper feeder: Max. 500 sheets; 60–220 g/m²; A6, B6, A5, B5, A4, Letter, Legal, Custom (105 x 148 mm – 216 x 356 mm)

PF-5130* Paper feeder: Max. 2 x 500 sheets; 60–220 g/m²; A6, B6, A5, B5, A4, Letter, Legal, Custom (105 x 148 mm – 216 x 356 mm)

PF-5140 Paper feeder:** Max. 2,000 sheets; 60–220 g/m²; A4

CB-5110L Cabinet: Wooden desk low

CB-5110H Cabinet: Wooden desk high

CB-5120L Cabinet: Metal desk low

CB-5120H Cabinet: Metal desk high

DT-5100 Document tray: To place originals or USB Keyboard

JS-5100 Job separator: 100 sheet internal job separator, 60–220 g/m²; A6–A4/Legal

MT-5100* 5 Bin Mailbox sorter + AK-5100 (100 sheets): 5 bins x 100 sheets A4, 60–163 g/m², main tray 500 sheets A4, 60–220 g/m²

DF-5100 Internal Document finisher: Max. 300 sheets A4; Max. 60–220 g/m²; stapling up to 50 sheets A4 at 3 positions

DF-5110* Document finisher + AK-5100 (100 sheets): Max. 1,000 sheets A4; 60–220 g/m²; stapling up to 50 sheets A4 at 3 positions

PH-5110 Punch unit for DF-5110: 2-hole/4-hole, 60–220 g/m²; A4

DF-5120* Document finisher + AK-5100 (100 sheets):

Main tray: Max. 3,000 sheets A4; max. 60–220 g/m²; stapling up to 50 sheets A4 at 3 positions

Punch unit included: 2-hole/4-hole, 60–220 g/m², A4

Sub tray: Max. 200 sheets A4; 60–220 g/m²

* Bridge Unit AK-5100 is required for the use of MT-5100, DF-5110, DF-5120

** Requires PF-5120

Memory upgrade

HD-11 HDD: 320 GB, for TASKalfa 356ci only

MM-16-128: Optional fax memory (128 MB) for fax system 10

Data Security Kit (E): In line with security level EAL3 USB

USB IC Card Reader + Card Authentication Kit (B): Support for various authentication keys available

IC Card Reader Holder 11: To integrate the USB IC Card Reader

UG-33: ThinPrint support

UG-34: IBM ProPrinter, Epson LQ-850, LinePrinter emulation

Optional interfaces

IB-50 Gigabit Ethernet: 10BaseT/100BaseTX/1000BaseT (RJ-45)

IB-51 Wireless LAN: 802.11b/g/n

UG-UxB: USB 2.0 (Hi-Speed) interface extension

CONSUMABLES

Average continuous toner yield in accordance with 5% coverage.

TASKalfa 356ci: Toner-Kit TK-5205C/M/Y: Cyan, magenta, yellow 12,000 pages A4, **TK-5205K:** Black 18,000 pages A4

WT-5190 Waste Toner Bottle: 44,000 sheets (5% coverage)

TASKalfa 406ci: Toner-Kit TK-5215C/M/Y: Cyan, magenta, yellow 15,000 pages A4, **TK-5215K:** Black 20,000 pages A4

WT-5191 Waste Toner Bottle: 44,000 sheets (5% coverage)

SH-10 Staple cartridge: 3 x 5,000 staples for DF-5100, DF-5110, DF-5120



KYOCERA Document Solutions Europe B.V. – Branch Office Germany
Otto-Hahn-Straße 12 – 40670 Meerbusch – Germany
Tel +49 (0) 2159 928-500 – Fax +49 (0) 2159 918-100
www.kyoceradocumentsolutions.eu – info@deu.kyocera.com

KYOCERA Document Solutions Inc. – 2-28, 1-Chome – Tamatsukuri
Chuo-Ku – Osaka 540-8585 – Japan – www.kyoceradocumentsolutions.com

* KYOCERA Document Solutions does not warrant that any specifications mentioned will be error-free. Specifications are subject to change without notice. Information is correct at the time of going to press. All other brand and product names may be registered trademarks or trademarks of their respective holders and are hereby acknowledged.